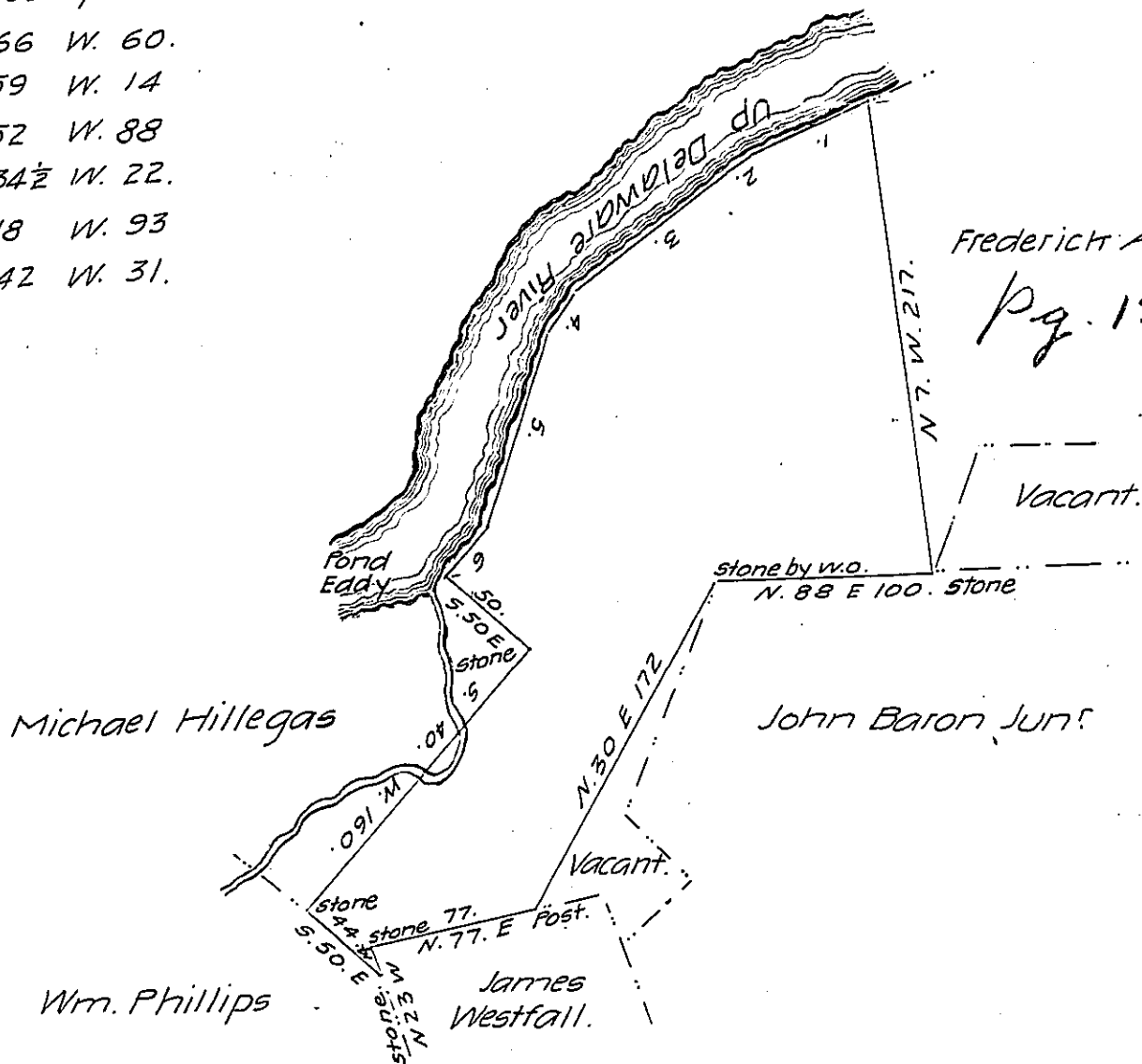


Courses up the River

- 1. S. 66 W. 60.
- 2. S. 59 W. 14
- 3. S. 52 W. 88
- 4 S. 34½ W. 22.
- 5. S. 18 W. 93
- 6. S. 42 W. 31.



By Virtue of a Warrant dated the thirteenth day of June 1842 Sur-
veyed the 13th & 14th days of September 1843 the above described Tract
of Land Situate in the Township of Westfall in the County of Pike on
which there is a settlement and Improvement. (Supposed to have been
commenced about the first March 1803) Adjoining land in the name
of Michael Hillegas and the Delaware River at Pond Eddy. Containing
two hundred and sixty eight acres sixteen perches & allowance of
Six p^t Ct for roads &c.

Pr. J. H. Wallace D.S.

To Jacob Gallade Esq
Surveyor General of Penna.

IN TESTIMONY that the above is a copy of the original remaining on file in
the Department of Internal Affairs of Pennsylvania, made
conformably to an Act of Assembly approved the 16th day of
February, 1833, I have hereunto set my Hand and caused
the Seal of said Department to be affixed at Harrisburg,
this ~~twenty-second~~ day of ~~January~~ 1907.

Isaac B. Brown
Secretary of Internal Affairs.